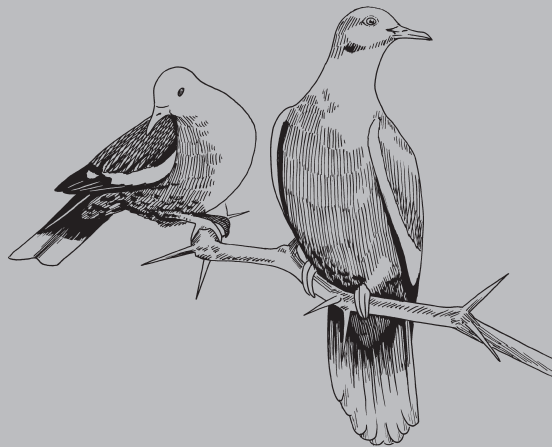


ARIZONA
**Dove and
Band-tailed
Pigeon
Regulations**
2016-2017



Arizona Game and Fish Department

5000 W. Carefree Highway
Phoenix, Arizona 85086

(602) 942-3000
www.azgfd.gov



Synopsis of Federal Regulations Applicable to Migratory Bird Hunting

Federal regulations regarding bird hunting are described in the Code of Federal Regulations (CFR). These can be found at www.ecfr.gov under "Title 50 – Wildlife and Fisheries." The regulations below can be found at 50 CFR 20, unless otherwise noted.

WEAPON – Migratory game birds may be taken only with a 10 gauge or smaller shotgun capable of holding not more than three shells unless it is plugged with a one-piece filler, incapable of removal without disassembling the gun, so the gun's total capacity does not exceed three shells. Birds may also be taken by falconry or by bow and arrow, or crossbow.

MOTOR-VEHICLE RESTRICTIONS – No person may take migratory game birds from or by means, aid, or use of any motor vehicle, motor-driven land conveyance, or aircraft of any kind. Special regulations govern handicapped hunters.

WATERCRAFT RESTRICTIONS – Migratory game birds may not be taken from or by means of any watercraft or other craft having a motor attached, or any sailboat, unless the motor has been completely shut off and/or the sails furled, and its progress therefrom has ceased. A watercraft under power may be used to retrieve dead or crippled birds but no shooting is permitted while the watercraft is underway. No person shall take migratory game birds by means or aid of any motor driven land, water, or air conveyance, or any sailboat used for the purpose of or resulting in the concentrating, driving, rallying, or stirring up of any migratory bird.

DECOYS, CALLS AND BAITING – Migratory game birds may not be taken by the use or aid of live decoys, recorded or electronically amplified bird calls or recorded or electrically amplified imitations of bird calls or sounds. It is illegal to take birds by the aid of baiting, or on or over any baited area, where a person knows or reasonably should know that the area is or has been baited. An area is considered baited for 10 days after the complete removal of all bait. It is legal to take migratory game birds, except waterfowl, coots and cranes, on or over lands or areas that are not otherwise baited areas, and where grain or other feed has been distributed or scattered solely as the result of manipulation of an agricultural crop or other feed on the land where grown, or solely as the result of a normal agricultural operation.

RETRIEVAL AND TAGGING – No person shall kill or cripple any migratory game bird without making a reasonable effort to retrieve the bird and retain it in his actual custody while in the field. Crippled birds must be killed immediately. Any birds

HUNTERS: MOURNING DOVE WING COLLECTION

Arizona is cooperating with the U.S. Fish & Wildlife Service in collecting mourning dove wings from hunters this year. Randomly selected hunters will be asked to save one wing from each dove during the first week of the season and mail the wings (postage free) to the U.S. Fish & Wildlife Service. Data from the wings will be used to estimate annual productivity of the dove population, and will be used in helping to establish hunting regulations in the future.

SHOTGUN SHELLS ARE LITTER, PICK THEM UP.

All hunters are responsible for cleaning up after themselves. Shell casings (shotshell hulls) and associated debris constitute litter and must be picked up and packed out.

Littering while hunting or fishing are revocable violations, and a conviction can result in the loss of hunting privileges for up to five years.

It only takes a few minutes at the end of the hunt to pick up, which keeps the area clean for other users, protects wildlife, and will help preserve Arizona's dove hunting tradition for future generations.



FOR YOUTH HUNTERS

In an effort to introduce kids and beginners to hunting, the Arizona Game and Fish Department is collaborating with sportsmen's groups, gun clubs, and conservation organizations, to host mentored, hands-on hunting camps and events throughout the season and across the state. These programs offer an excellent way to learn about hunting in a structured and supportive manner. The dove hunting opportunities include:

Sept. 2–3: Safford Youth Dove Hunting Clinic and Hunt

Experts teach youth new to hunting about firearm safety, dove science, identification, locating, hunting and cleaning and cooking dove. Evening clinic, followed by live hunt next day.

- Location: Dry Lake Park, Safford area
- Hosted by: Arizona Game and Fish, South Eastern Arizona Sportsmen Club
- Registration by August 30: Devin Skinner, (520) 591-7880, dskinner@azgfd.gov

Sept. 3: Robbins Butte Mentored Youth Dove Hunt

Learn how to dove hunt from experienced hunters including, identification, hunting tips, gun safety, mentoring and food provided just for kids at a Game and Fish wildlife area managed for migratory birds.

- Location: Buckeye, Robbins Butte Wildlife Area
- Hosted by: Arizona Game and Fish, Youth Outdoors Unlimited, Arizona Outdoor Sports, National Wild Turkey Federation
- Registration required: www.youthoutdoorsunlimited.com

Sept. 7 and 10: Youth and Families Beginner's Dove Hunt – CJ Biller Memorial

Classroom instruction Wednesday on hunting doves, shotgun instruction, firearm safety and clay target shooting, followed by a real dove hunt on Saturday. 30 spaces available.

- Location: Mesa, Utery Mountain Shooting Range, Game and Fish Mesa Office
- Hosted by: Youth Outdoors Unlimited, CJ Biller Family, Arizona Outdoor Sports, Game and Fish
- Register: www.youthoutdoorsunlimited.com

For a listing of other mentored camps offered this season, including small game and big game hunting camps, see page 24–28 of the 2016-17 Arizona Hunting Regulations or visit, www.azgfd.gov/outdoorskills. Another great source for dove-related information is: www.azgfd.gov/dove.

SUNRISE/SUNSET 2016-2017						
DATE	EASTERN		CENTRAL		WESTERN	
	RISE	SET	RISE	SET	RISE	SET
Sept. 1	5:54	6:44	6:03	6:53	6:12	7:02
Sept. 5	5:56	6:39	6:05	6:48	6:14	6:57
Sept. 10	6:00	6:32	6:09	6:41	6:18	6:50
Sept. 15	6:03	6:25	6:12	6:34	6:21	6:43
Sept. 20	6:06	6:18	6:15	6:27	6:24	6:36
Sept. 25	6:10	6:11	6:19	6:20	6:28	6:29
Sept. 30	6:13	6:04	6:22	6:13	6:31	6:22
Oct. 1	6:14	6:03	6:23	6:12	6:32	6:21
Oct. 5	6:17	5:58	6:26	6:07	6:35	6:16
Oct. 10	6:23	5:51	6:30	6:00	6:39	6:09
Oct. 15	6:24	5:45	6:33	5:54	6:42	6:03
Oct. 20	6:28	5:39	6:37	5:48	6:46	5:57
Oct. 25	6:33	5:34	6:42	5:43	6:51	5:52
Oct. 30	6:37	5:29	6:46	5:38	6:55	5:47
Nov. 1	6:39	5:27	6:48	5:36	6:57	5:45
Nov. 5	6:42	5:23	6:51	5:32	7:00	5:41
Nov. 10	6:47	5:20	6:56	5:29	7:03	5:38
Nov. 15	6:51	5:16	7:00	5:25	7:09	5:34
Nov. 20	6:56	5:14	7:05	5:23	7:14	5:32
Nov. 25	7:01	5:12	7:10	5:21	7:19	5:30
Nov. 30	7:05	5:11	7:14	5:20	7:23	5:29
Dec. 1	7:06	5:11	7:15	5:20	7:24	5:29
Dec. 5	7:09	5:11	7:18	5:20	7:27	5:29
Dec. 10	7:13	5:12	7:22	5:21	7:31	5:30
Dec. 15	7:16	5:13	7:25	5:22	7:34	5:31
Dec. 20	7:19	5:15	7:28	5:24	7:37	5:33
Dec. 25	7:22	5:18	7:31	5:27	7:40	5:36
Dec. 30	7:23	5:21	7:32	5:30	7:41	5:39
Jan. 1	7:24	5:23	7:33	5:32	7:42	5:41
Jan. 5	7:24	5:26	7:33	5:35	7:42	5:44

One Feathered Wing

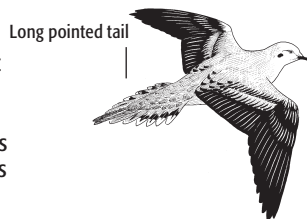
Sportsmen should note that one feathered wing must be left attached to all migratory game birds, including Eurasian collared-doves, until they reach their final destination.

Dove Bands

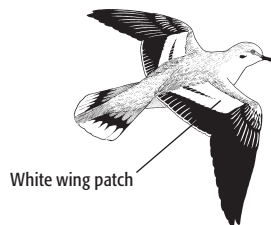
Since 2003, Arizona has been banding mourning doves as part of a nationwide effort to improve mourning dove management. The hunter is a critical link in this mourning dove banding study. Banded doves have a numbered band and phone number. If you harvest a banded mourning dove please call 1(800) 327-BAND (2263) to report it or go online at www.reportband.gov. Hunters can keep the bands and will be provided a certificate identifying the age, sex, date and location the bird was banded.

Legal Game Doves (May Be Hunted During Open Season)

MOURNING DOVE Slightly smaller than the white-winged dove. Mourning doves may fly with white-winged doves, but can be distinguished by their more rapid wing beat, more erratic flight path and pointed tail. In fall, the highest densities are found in desert agricultural areas, around water sources and desert areas where annual plants and seeds are abundant.

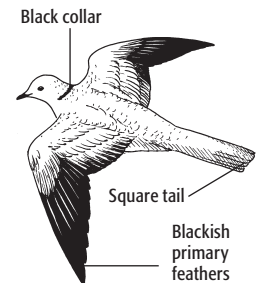


WHITE-WINGED DOVE Somewhat larger than a mourning dove with a white bar on the upper wing surface and a long, moderately rounded tail. The range of white-winged doves generally coincides with the distribution of the saguaro cactus.



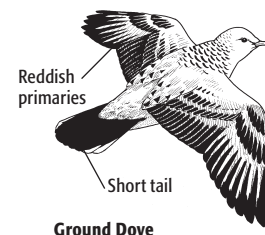
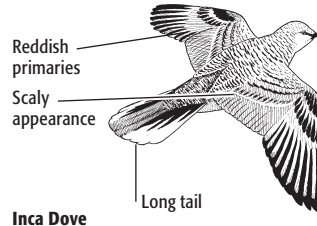
Legal Game Doves (May Be Hunted During Open Season)

EURASIAN COLLARED-DOVE Eurasian collared-doves are larger than both the native white-winged and mourning doves. They have a black collar on the top part of the neck, pale gray coloration, and dark primary feathers. These doves are an introduced species that have recently expanded their range into Arizona. Originally native on the Indian subcontinent, this bird was introduced to the Bahamas in the 1970s and quickly spread to Florida. They are widely distributed in Arizona.



Protected Birds (May Not Be Hunted)

INCA DOVE AND GROUND DOVE: Small birds approximately half the size of a mourning dove. Both are gray and fly close to the ground with rapid wingbeats. The inca has a scaly appearance with a long tail that has white margins. Ground dove has a short, round dark tail. Common summer resident in the better watered valleys, mostly south of the Mogollon Rim.



Dove: Commission Order 19

GENERAL DOVE

Open Areas do not include areas within municipal parks, municipal preserves, county parks, county preserves, airports, golf courses, or posted water treatment facilities (except as specifically opened in this Commission Order) or areas closed to hunting under A.R.S. Sections 17-303 and 17-304 or Commission Rules R12-4-321, R12-4-801, R12-4-802 and R12-4-803.

Season Dates	Notes	Open Areas	Legal Wildlife
Sep 1 - Sep 15, 2016	(1,4,6,7,8,9,10,11,12,13,14,15,16,17,18,19,20,21)	Open Areas Statewide (refer to the notes for some restrictions)	Any Mourning or White-winged dove
Nov 25, 2016 - Jan 8, 2017	(2,4,6,7,8,10,11,12,13,14,15,16,17,18,19,20,21)	Open Areas Statewide (refer to the notes for some restrictions)	Mourning dove
Sep 1, 2016 - Aug 31, 2017	(3,6,7,8,9,10,11,12,13,14,15,16,17,18,19,20,21)	Open Areas Statewide (refer to the notes for some restrictions)	Any Eurasian collared dove

LAWFUL TAKING DEVICE: Shotgun, bow and arrow, or crossbow as prescribed in R12-4-304 or by falconry. Pneumatic weapons are legal for Eurasian collared doves as prescribed in R12-4-304.

LICENSE REQUIRED: Any valid hunting license plus an Arizona Migratory Bird Stamp (an Arizona Migratory Bird Stamp is not required for Eurasian collared doves). Falconers must be licensed pursuant to R12-4-422 or exempted pursuant to R12-4-407. If a youth (ages 10-17) is participating in a General Hunt, he/she does not need to purchase an Arizona Migratory Bird Stamp, as the stamp is included with the Youth Combo Hunt/Fish license.

SHOOTING HOURS: One-half hour before sunrise until sunset.

YOUTH-ONLY DOVE

Open Areas do not include areas within municipal parks, municipal preserves, county parks, county preserves, airports, golf courses, or posted water treatment facilities (except as specifically opened in this Commission Order) or areas closed to hunting under A.R.S. Sections 17-303 and 17-304 or Commission Rules R12-4-321, R12-4-801, R12-4-802 and R12-4-803.

Season Dates	Notes	Open Areas	Legal Wildlife
Sep 3 - Sep 4, 2016	(1,3,5,9,22)	Robbins Butte Wildlife Area	Mourning dove, White-winged dove, and Eurasian collared dove

LAWFUL TAKING DEVICE: Shotgun, bow and arrow, or crossbow as prescribed in R12-4-304. Pneumatic weapons are legal for Eurasian collared doves as prescribed in R12-4-304.

LICENSE REQUIRED: Any valid hunting license required for participants age 10 through 17; participants under 10 need not be licensed if accompanied by a licensed adult as prescribed in ARS 17-335.

SHOOTING HOURS: One-half hour before sunrise until sunset.

ELIGIBLE HUNTERS: Persons are eligible to participate up to their 18th birthday. A youth hunter, whose 18th birthday occurs during a "Youth-Only" designated hunt for which the hunter has a valid hunt permit-tag or nonpermit-tag, may continue to participate for the duration of that "Youth-Only" designated hunt.

FALCONRY-ONLY DOVE

Open Areas include areas closed to hunting by R12-4-321 but do not include areas closed to hunting under A.R.S. Sections 17-303 and 17-304 or Commission Rules R12-4-321, R12-4-801, R12-4-802 and R12-4-803.

Season Dates	Notes	Open Areas	Legal Wildlife
Sep 16 - Nov 1, 2016	(4,9,10,11,12,13,14,15,16,17,18,20,21)	Open areas statewide (excluding National Wildlife Refuges)	Mourning dove, White-winged dove, and Eurasian collared dove

LAWFUL TAKING DEVICE: Falconry as prescribed in R12-4-101 and R12-4-318.

LICENSE REQUIRED: Any valid hunting license plus an Arizona Migratory Bird Stamp. Falconers must be licensed pursuant to R12-4-422 or exempted pursuant to R12-4-407.

HAWKING HOURS: One-half hour before sunrise until sunset.

Dove Notes:

1. **BAG LIMIT:** Fifteen (15) Mourning and white-winged doves per day in the aggregate of which no more than ten (10) may be white-winged doves. **POSSESSION LIMIT:** Forty-five (45) Mourning and white-winged doves in the aggregate after opening day of which no more than fifteen (15) may be taken in any one day. Of the forty-five (45) dove possession limit, only thirty (30) may be white-winged doves of which no more than ten (10) may be taken in any one day.
2. **BAG LIMIT:** Fifteen (15) Mourning Doves per day. **POSSESSION LIMIT:** Forty-five (45) Mourning Dove after opening day, of which no more than fifteen (15) may be taken in any one day.
3. **EURASIAN COLLARED DOVE BAG AND POSSESSION LIMIT:** Unlimited.
4. **FALCONRY BAG LIMIT:** Three (3) per day. Note: The aggregate falconry bag limit of all migratory game birds is three (3), comprised of any combination of migratory game bird species for which a general season, that includes falconry as a legal method of take, or a falconry-only season is open. Falconers should consult Commission Orders 19, 20, 21, and 22 for season dates and open areas. The falconry bag limit is not in addition to the firearms bag limits. **FALCONRY POSSESSION LIMIT:** Nine (9) in the aggregate of all migratory game birds in season (Commission Orders 19 through 22) after opening day, of which no more than three (3) may be taken in any one day.
5. **SELECTION OF HUNTERS:** A limited portion of the wildlife area will be restricted to junior hunters only. Shooting stations will be assigned on a first-come, first served basis unless there are more people desiring to participate than available shooting stations, then a drawing will be held at 4:45 a.m. Hunters must check in prior to hunting and check out following completion of their hunt at the Game and Fish Department check station.
6. The Bill Williams River, Cibola, Imperial, Buenos Aires, Havasu and San Bernadino National Wildlife Refuges are open to dove hunting **EXCEPT** for posted portions. A fee may be required for hunting on National Wildlife Refuges, see refuge regulations.
7. The following Pima County parks and preserves are open to hunting: A-7 Ranch in Units 32 and 33, Oracle Ridge Property in Unit 33, Six Bar Ranch in Unit 33, Emperita Ranch in Unit 34B, Bar V Ranch in Unit 34B, Sands Ranch in Unit 34B, Clyne Ranch in Unit 34B, Diamond Bell Ranch in Unit 36A, Marley Ranch in Units 36A and 36B, Rancho Seco in Units 36A and 36B, Kings 98 Ranch in Unit 36C, Old Hayhook Ranch in Unit 36C, Verdugo in Unit 36C, Bee Ranch in Unit 37A, Mordka Ranch in Unit 37A, Buckelew Ranch in Unit 37A, Carpenter Ranch in Unit 37A, Cochie Canyon Ranch in Unit 37A, Lords Ranch in Unit 37A, and Tortolita Mountain Park in Unit 37A. Hunting is not permitted in County Parks within 1/4 mile of any developed picnic area, developed camp ground, shooting range, occupied building, boat ramp, or golf course. Developed areas do not include trails.
8. The following parks and preserves in Maricopa County are open to hunting: Lake Pleasant, White Tank Mountains, McDowell Mountain, and Estrella Mountain Regional parks. Hunting in parks and preserves opened by this Commission Order is not permitted within 1/4 mile of any developed picnic area, developed camp ground, shooting range, occupied building, boat ramp, or golf course. Developed areas do not include trails.
9. Robbins Butte Wildlife Area - **EXCEPT** as authorized in this Commission order for the September Juniors-Only Dove season, the following area is closed to all taking of wildlife during the September dove season: Beginning at the junction of the Robbins Butte main access road and the road which runs northeasterly from the orange irrigation pump, which lies approximately 1/2 mile west of US Hwy 85; northeasterly 1-1/4 mile along posted fenceline to the southerly edge of the active channel of the Gila River; southwesterly 2-1/2 miles along the southerly edge of the active channel of the river to the south center section line of Section 21; south 1 mile along posted center section line and east edge of dirt road to approximately the center of Section 28 and the intersection of the north edge of a dirt road; east 3/4 mile along posted north edge of road to a cattleguard; north 1/4 mile along posted fenceline to the north edge of Robbins Butte main access road; easterly 1-1/2 miles along the posted north edge of the Robbins Butte main access road to the point of beginning; all in T1S, R4W, Gila and Salt River Base and Meridian, Maricopa County, Arizona.
10. The Grand Canyon-Parashant, Vermillion Cliffs, Sonoran Desert, Ironwood Forest, and Agua Fria National Monuments are open to hunting.
11. Falconry hunting is not permitted on National Wildlife Refuges.
12. Hunting is not permitted in Unit 26M in the following described area: Those private lands lying just north of the Town of Cave Creek in Sections 10, 11, 12, 14 and 15 of Township 6 North, Range 4 East.
13. Hunting is not permitted in Unit 36B in the following described area: in the posted portion of Sopori Ranch south of Arivaca Road in Sections 14 and 15, Township 20 South, Range 11 East. The remainder of Sopori Ranch is open to hunting.
14. Hunting is not permitted in Unit 37A in the following described area in the Town of Marana: beginning at the intersection of Sanders Road and Avra Valley Road; north on Sanders Road to the Santa Cruz River; southeast along the Santa Cruz River to the Central Arizona Project Canal; southwest along the Central Arizona Project Canal to Avra Valley Road; west on Avra Valley Road to the intersection of Sanders Road.
15. Hunting is not permitted in Units 26M and 37A in the following described area in the Town of Eloy: beginning with the intersection of Cornman Road and LaPalma Road; south on LaPalma Road to Milligan Road; west on Milligan Road to Overfield Road; north on Overfield Road to Cornman Road; east on Cornman Road to LaPalma Road.
16. Hunting is not permitted in Units 43A and 44B in the following described area in the Town of Quartzsite: Sections 15, 16, 17, 20, 21, 22, 23, 26, 27, 28, 29, 30, 31, 32, 33, 34, and 35, Township 4 North, Range 19 West and Sections 2, 3, and 4, Township 3 North, Range 19 West.
17. Within Unit 25M as described in R12-4-108, all incorporated lands, including private property within municipal boundaries, are closed to hunting unless opened under Commission Order. Incorporated includes all municipal and corporate limits. County islands are open to hunting provided the hunter does not discharge a firearm within 1/4 mile of an occupied farmhouse, residence, cabin, lodge, or building without permission of the owner or resident. Privately held lands within county islands may be closed by the landowner.

18. Hunting is not permitted in Unit 26M in the following described area in the City of Maricopa: that portion of the city east of Green Road, south of Smith Enke Road, and east of the Cobblestone subdivision and that portion of the city north of Farrell Road and west of White and Parker Road.
19. A portion of Unit 25M is closed to hunting. Hunting is not permitted in the following area of Unit 25M: an unincorporated portion of land west of Loop 202 (San Tan Freeway) known as the Elliot and Hawes County Island in Section 16, Township 1 South, Range 7 East.
20. In Units 11M and 38M, the private property within municipal boundaries is closed to hunting.
21. The following City of Tucson Water Properties located in Avra Valley are open to dove hunting: the Duval property in Unit 36C and the Buckalew, Flying E Bar, Ed Anway, Kai, Tucker, and Trust 205 properties in Unit 37A; all other Tucson Water Properties are closed to hunting. All open City of Tucson properties are foot access only at designated entry points. Please sign in and out at sign-in boxes located at designated entry points.
22. The entrance to Robbin's Butte Wildlife Area is located on the west side of US_85 near mile post 147 just south of the Gila River.

HARVEST INFORMATION PROGRAM: As required by R12-4-203, dove hunters age 18 and older shall have in their possession an Arizona Migratory Bird Stamp which will validate their license for the federal Harvest Information Program. The Arizona Migratory Bird Stamp may be obtained, for a cost of \$5.00 on or after July 1, from any Arizona Game and Fish Department office or wherever hunting licenses are sold.

Band-tailed Pigeon: Commission Order 20

GENERAL BAND-TAILED PIGEON

Open Areas do not include areas within municipal parks, municipal preserves, county parks, county preserves, airports, golf courses, or posted water treatment facilities (except as specifically opened in this Commission Order) or areas closed to hunting under A.R.S. Sections 17-303 and 17-304 or Commission Rules R12-4-321, R12-4-801, R12-4-802 and R12-4-803.

Season Dates	Notes	Open Areas	Legal Wildlife
Sep 2 - Sep 15, 2016	(1,2,3,4)	Open Areas Statewide	Any Band-tailed Pigeon

LAWFUL TAKING DEVICE: Shotgun, bow and arrow, or crossbow as prescribed in R12-4-304 or by falconry.

LICENSE REQUIRED: Any valid hunting license plus an Arizona Migratory Bird Stamp plus online Band-tailed Pigeon registration. Falconers must be licensed pursuant to R12-4-422 or exempted pursuant to R12-4-407. If a youth (ages 10-17) is participating in a General Hunt, he/she does not need to purchase an Arizona Migratory Bird Stamp, as the stamp is included with the Youth Combo Hunt/Fish license.

SHOOTING HOURS: One-half hour before sunrise until sunset.

BAG LIMIT: Two (2) Band-tailed pigeons per day.

POSSESSION LIMIT: Six (6) Band-tailed pigeons after opening day, of which no more than two (2) may be taken in any one day.

FALCONRY BAG LIMIT: Three (3) per day. Note: The aggregate falconry bag limit of all migratory game birds is three (3), comprised of any combination of migratory game bird species for which a general season, that includes falconry as a legal method of take, or a falconry-only season is open. Falconers should consult Commission Orders 19, 20, 21 and 22 for season dates and open areas. The falconry bag limit is not in addition to the firearms bag limits.

FALCONRY POSSESSION LIMIT: Nine (9) in the aggregate of all migratory game birds in season (Commission Orders 19 through 22) after opening day, of which no more than three (3) may be taken in any one day.

Band-tailed Pigeon Notes:

- HARVEST INFORMATION PROGRAM:** As required by R12-4-203, band-tailed pigeon hunters age 18 and older shall have in their possession an Arizona Migratory Bird Stamp which will validate their license for the federal Harvest Information Program. The Arizona Migratory Bird Stamp may be obtained, for a cost of \$5.00 on or after July 1, from any Arizona Game and Fish Department office or wherever hunting licenses are sold.
- To improve harvest estimates band-tailed pigeon hunters age 16 and older will be asked to submit a voluntary online registration. This registration can be completed online at the following website www.azgfd.gov/bandtailedpigeon.
- The Grand Canyon-Parashant, Vermillion Cliffs, Sonoran Desert, Ironwood Forest, and Agua Fria National Monuments are open to hunting.
- Hunting is not permitted in Unit 26M in the following described area: Those private lands lying just north of the Town of Cave Creek in Sections 10, 11, 12, 14 and 15 of Township 6 North, Range 3 East.

RECENT CHANGES:

Mourning Dove Bag and Possession Limit

Please note the mourning dove bag limit is 15 and the white-winged dove bag limit is 10. The early season bag limit is 15 doves in aggregate of which only 10 can be white-wings. The possession limit is forty-five (45) mourning and white-winged doves in the aggregate after opening day of which no more than fifteen (15) may be taken in any one day. Of the forty-five (45) dove possession limit, only thirty (30) may be white-winged doves of which no more than ten (10) may be taken in any one day.

For more information on hunting doves in Arizona visit www.azgfd.gov/dove

Arizona Game and Fish Department

5000 W. Carefree Highway
Phoenix, Arizona 85086

(602) 942-3000
www.azgfd.gov



The Arizona Game and Fish Department prohibits discrimination on the basis of race, color, sex, national origin, age, religion, or disability in its programs and activities. If anyone believes that they have been discriminated against in any of the AZGFD's programs or activities, including its employment practices, the individual may file a complaint alleging discrimination directly with the Director's Office, 5000 W. Carefree Highway, Phoenix, AZ 85086-5000, (602) 942-3000, or with the U.S. Fish and Wildlife Service, Attn: Civil Rights Coordinator for Public Access, 5275 Leesburg Pike, MS:WSFR, Falls Church, VA 22041-3803. Persons with a disability may request a reasonable accommodation or this document in an alternative format by contacting the Director's Office as listed above.